



Energy Division

HV torque controlled lugs and
connectors for terminations
and joints up to 72 kV



HV torque controlled lugs and connectors for terminations and joints up to 72 kV

Features - Benefits



Torque controlled shear off bolts

- fast and safe installation
- excellent electrical performance
- excellent mechanical performance
- easy installation with socket wrench

Application range

- pre-engineered design for perfect fit
- Cu and Al conductors
- suitable for up to 1600 mm²

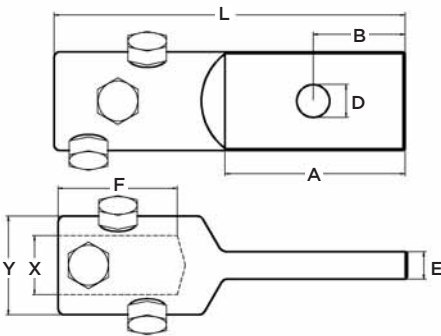
Connectors

- straight and size transition type
- body made of aluminum alloy

Lugs

- variety of different palms available
- body made of tinned aluminum alloy

Cable lug with 1-hole palm (EPPA-052-X/Y)

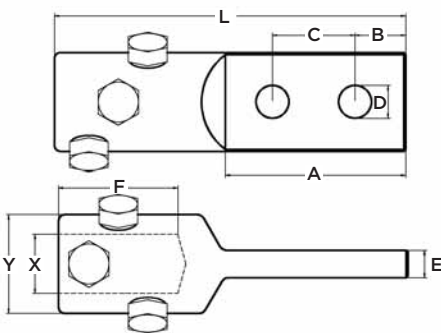


Dimension:

- | | |
|------------|-----------|
| L = 190 mm | D = 18 mm |
| A = 100 mm | E = 25 mm |
| B = 50 mm | F = 64 mm |

X, Y according to the cable dimensions

Cable lug with 2-hole palm (EPPA-051-X/Y)

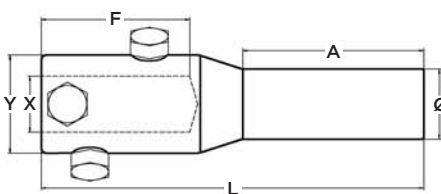


Dimension:

- | | |
|-------------|-----------|
| L = 190 mm | D = 18 mm |
| A = 100 mm | E = 25 mm |
| B = 27.5 mm | F = 64 mm |
| C = 45 mm | |

X, Y according to the cable dimensions

Cable lug with rod



Dimension:

- ROD Ø 30 mm (EPPA-050-X/Y)**
- | | |
|------------|-----------|
| L = 190 mm | F = 64 mm |
| A = 100 mm | Ø = 30 mm |

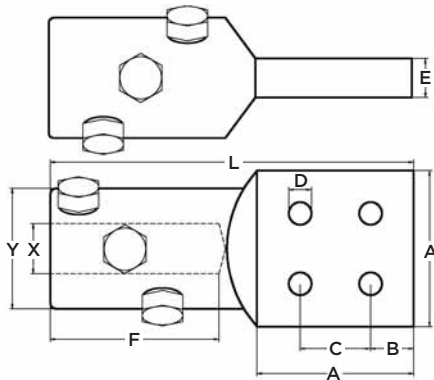
- ROD Ø 40 mm (EPPA-053-X/Y)**
- | | |
|------------|------------|
| L = 264 mm | F = 106 mm |
| A = 125 mm | Ø = 40 mm |

- ROD Ø 50 mm (EPPA-061-X/Y)**
- | | |
|------------|------------|
| L = 264 mm | F = 106 mm |
| A = 125 mm | Ø = 50 mm |



X, Y according to the cable dimensions

Cable lug with 4-hole palm NEMA pad (EPPA-054-X/Y)



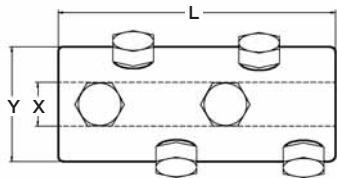
Dimension:

Contact plate 100 mm x 100 mm
 L = 232 mm C = 45 mm
 A = 100 mm D = 14.5 mm
 B = 27.5 mm F = 112 mm
 E = 25 mm

Contact plate 80 mm x 80 mm
 L = 212 mm C = 45 mm
 A = 80 mm D = 14.5 mm
 B = 17.5 mm F = 112 mm
 E = 25 mm

X, Y according to the cable dimensions

Mechanical connector for straight connection (EPPA-047-X/Y-L)

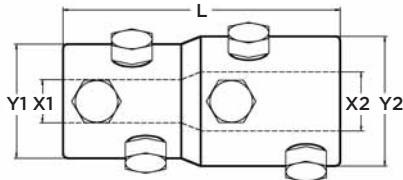


Dimension:

L = 130 mm L = 180 mm

X, Y according to the cable dimensions

Mechanical connector for size transition (EPPA-047-X1/Y1-X2/Y2-L)

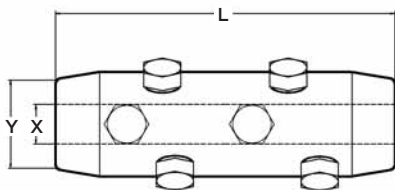


Dimension:

L = 130 mm L = 180 mm

X1/Y1, X2/Y2 according to the cable dimensions

Mechanical connector for cables with small insulation thickness (EPPA-063-X1/Y1-X2/Y2-L)

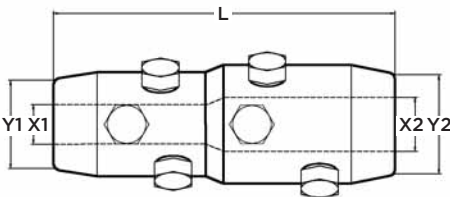


Dimension:

L = 180 mm

L = 230 mm

X1/Y1, X2/Y2 according to the cable dimensions



The Energy Division, a global operating unit of Tyco Electronics develops manufactures and markets products and systems for the electrical power industry. Today, the Energy Division employs approximately 4.000 people and annual sales amount to almost \$800 million. Our products are extensively employed by power utilites and equipment manufacturers, in rail transport systems and in industry around the world.

Tyco Electronics Raychem GmbH
Energy Division
Finsinger Feld 1
85521 Ottobrunn/Munich, Germany

Phone: +49-89-6089-0
Fax: +49-89-6096345

<http://energy.tycoelectronics.com>



Our commitment. Your advantage.